



TRIPLE-IMPACT PLAN: AFFORDABILITY, RESILIENCE & CLIMATE ACTION

June 13, 2025

CT DEEP received financial support from the EPA under Assistance Agreement 5D - 00A01405.

MEETING GROUND RULES

- This meeting is being recorded. A recording will be posted on the website
- For those on Zoom, the chat is public record. Please be respectful and avoid off-topic conversations.
- If you have not already signed up for public comment and are on Zoom, you can send a direct message to Allie Brown to sign up.
- We will first take public comment in the room and then go to Zoom
- Limit of 2 minutes for verbal public comment.
- You can add written comments to the chat or email them to deep.climatechange@ct.gov
- During the brief Q&A opportunity with Commissioner Dykes and Representative Parker.
 - Zoom – write questions in the Q&A and moderator will read selected questions
 - In Person – we will call on you
- If someone causes a disruption, we will first try to remove the individual(s) from the meeting. If we have to stop, we will re-start and you can rejoin using the original meeting link.

AGENDA

- **Welcome Remarks – Commissioner Dykes (10:05am)**
- **Reflections on Legislative Session (10:15 am)**
 - Remarks Representative Parker
 - Panel Discussion – Rep. Parker & Commissioner Dykes
 - Audience Q & A
- **Climate Planning: Next Steps – Emily Pysh, CT DEEP (10:50 am)**
- **Public Comment (11:05 am)**
 - Guiding Question – what “triple-impact” actions do you want to see?



TRIPLE-IMPACT PLAN: AFFORDABILITY, RESILIENCE & CLIMATE ACTION

June 13, 2025

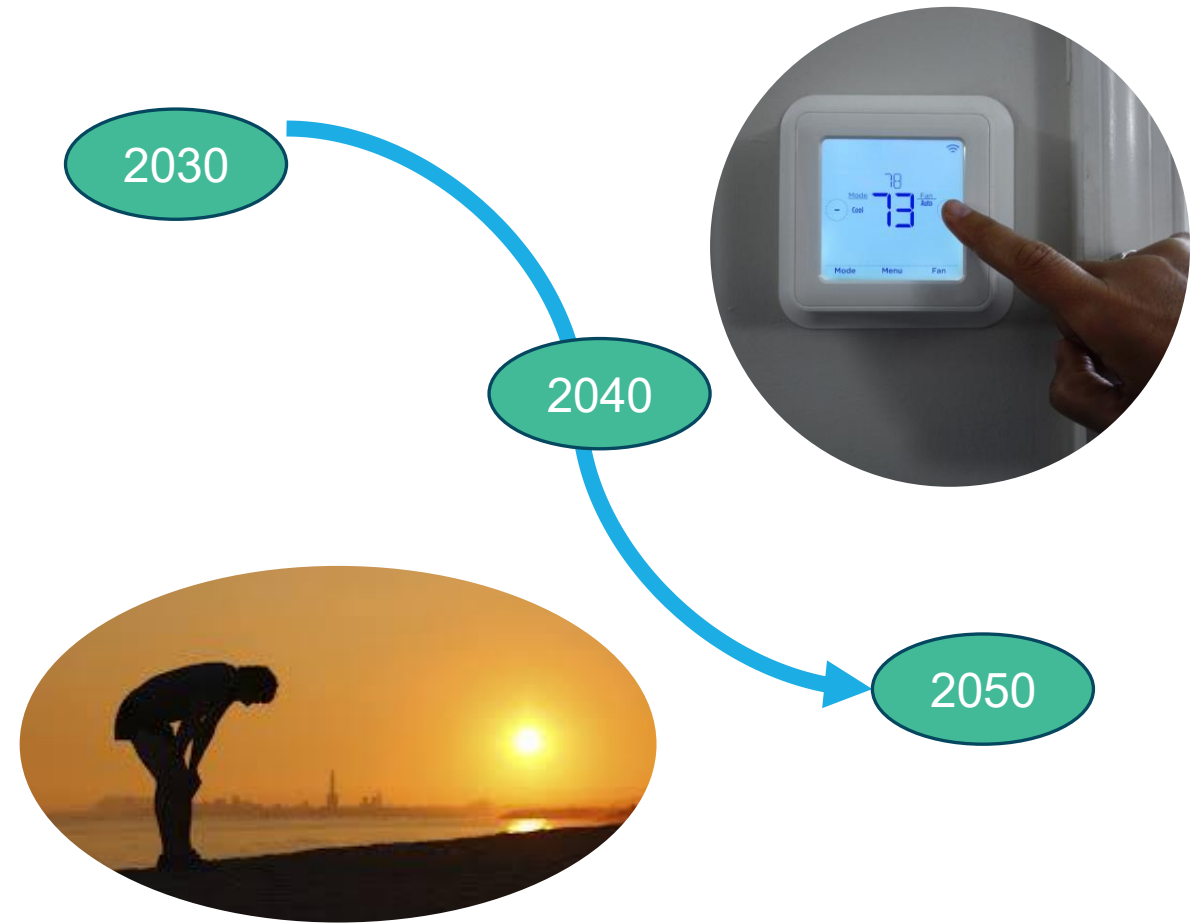
CT DEEP received financial support from the EPA under Assistance Agreement 5D - 00A01405.

NEW STATUTORY ECONOMY-WIDE EMISSIONS TARGETS

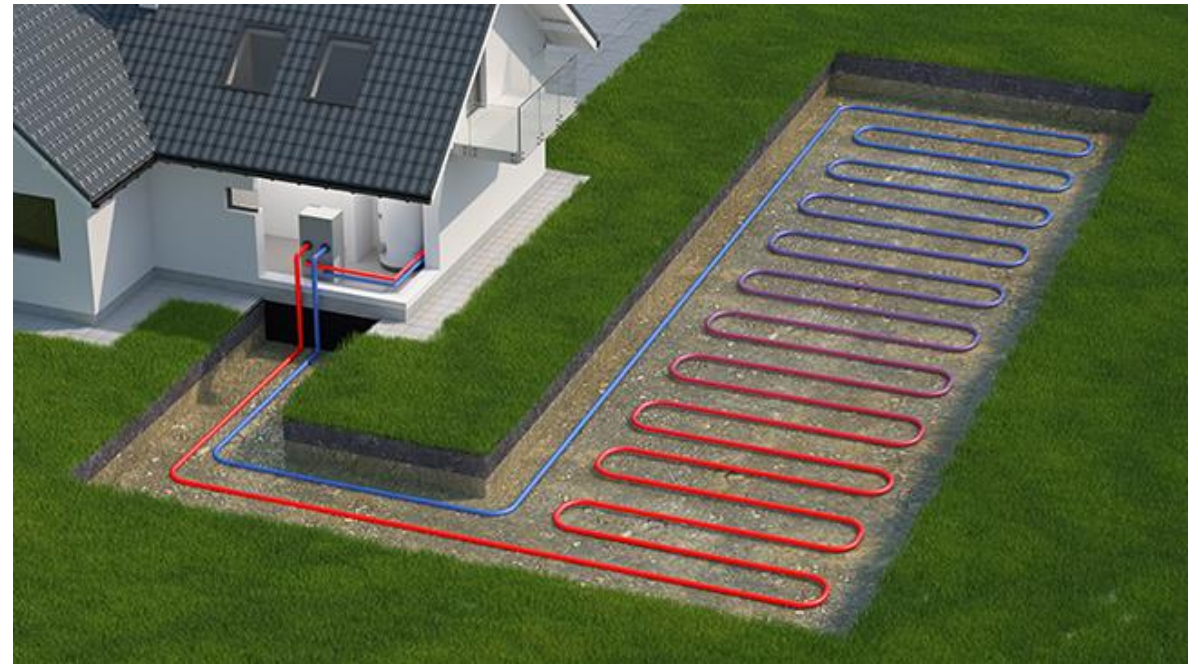
- **2030:** Level of emissions 45% below 2001 levels
- **2040:**
 - a zero-carbon energy supply
 - Level of emissions 65% below 2001 levels
- **2050:**
 - an economy-wide net-zero level
 - (provided that direct and indirect emissions of greenhouse gases are at least 80% below the level emitted in 2001)

CONNECTICUT'S TRIPLE-IMPACT PLAN

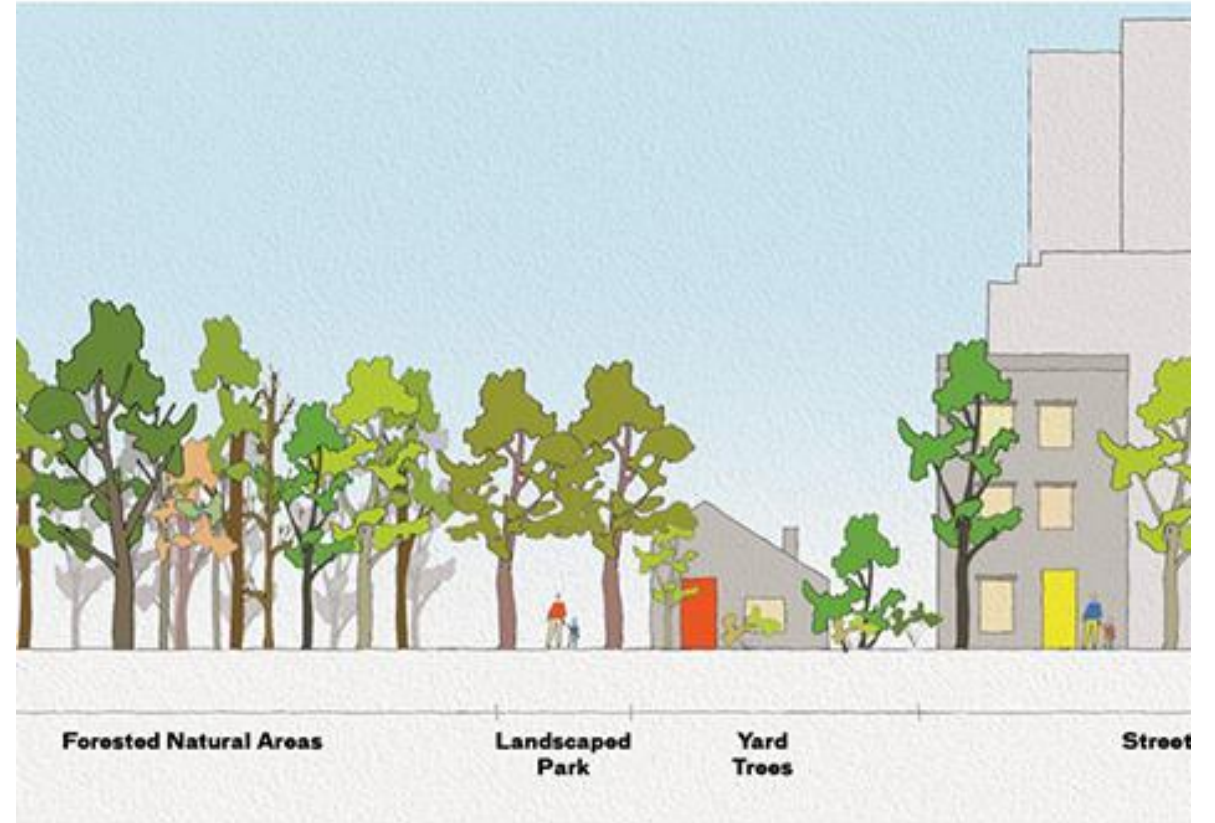
- ✓ Identify actions to lower energy costs
- ✓ Increase community resilience to the impacts of climate change
- ✓ Reduce climate pollution to meet the state's 2030, 2040 and 2050 emissions goals



TRIPLE-IMPACT ACTION: HEAT PUMP DEPLOYMENT



TRIPLE-IMPACT ACTION: URBAN FORESTRY



AND MANY MORE ACTIONS






**Reflections on Legislative Session
Remarks Representative Parker**



Reflections on Legislative Session
Panel Discussion
Representative Parker & Commissioner Dykes



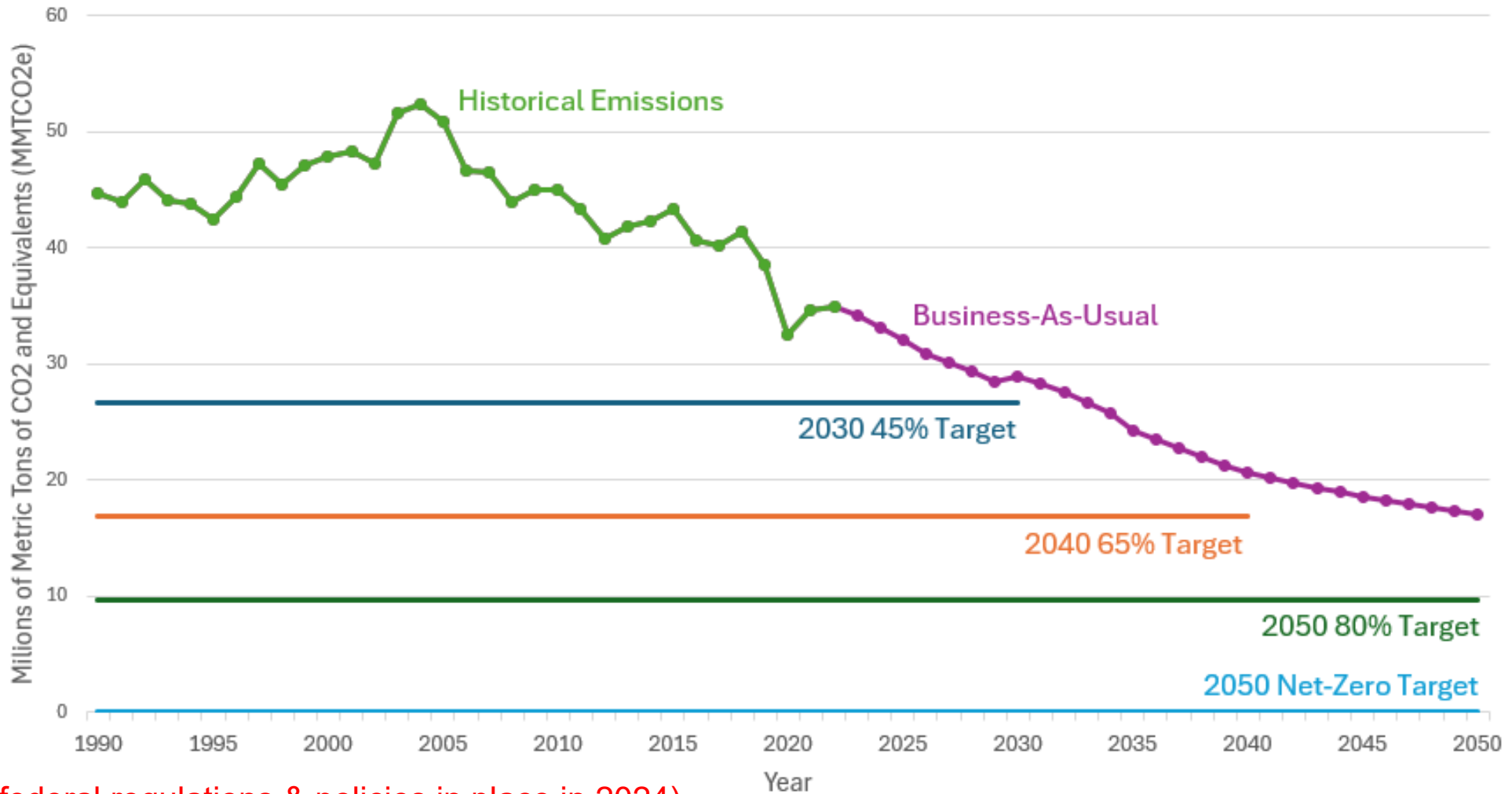
Reflections on Legislative Session
Audience Q & A

A stylized landscape illustration. The top right corner features a yellow sun. Below it is a green hill with a dark blue outline. The bottom of the image shows a light blue area representing water, also with a dark blue outline. The text is centered on the green hill.

Climate Planning Next Steps
Presenter Emily Pysh

CONNECTICUT'S PROJECTED GREENHOUSE GAS EMISSIONS

Gross Emissions with Business-As-Usual (2024*)



(*BAU includes federal regulations & policies in place in 2024)

One planning grant, three deliverables over 4 years



Priority Climate Action Plan (PCAP)

- Due **March 1 or April 1, 2024**
- Near-term, implementation-ready, **priority greenhouse gas (GHG) reduction measures**
- **Prerequisite** for implementation grant



Comprehensive Climate Action Plan (CCAP)

- Due **July 1, 2026**
- **All sectors / significant GHG sources and sinks**
- **Near- and long-term GHG emission reduction goals and strategies**



Status Report

- Due in **2027** (N/A for tribes or territories)
- **Updated analyses and plans**
- **Progress and next steps** for key metrics

TERMS AND ACRONYMS



CPRG = Climate Pollution Reduction Grant



PCAP = Priority Climate Action Plan



CCAP= Comprehensive Climate Action Plan

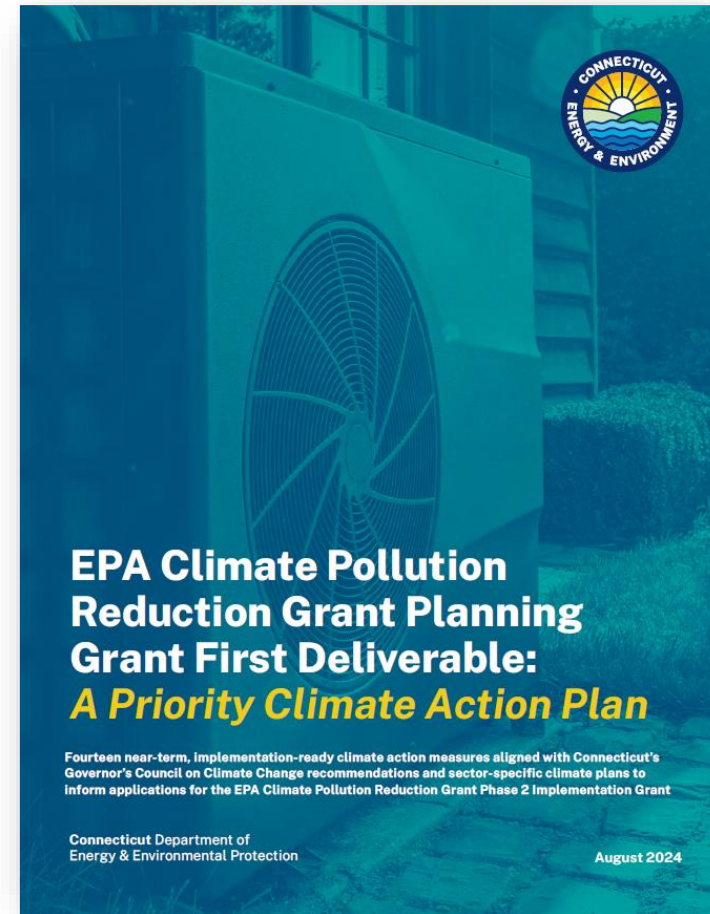
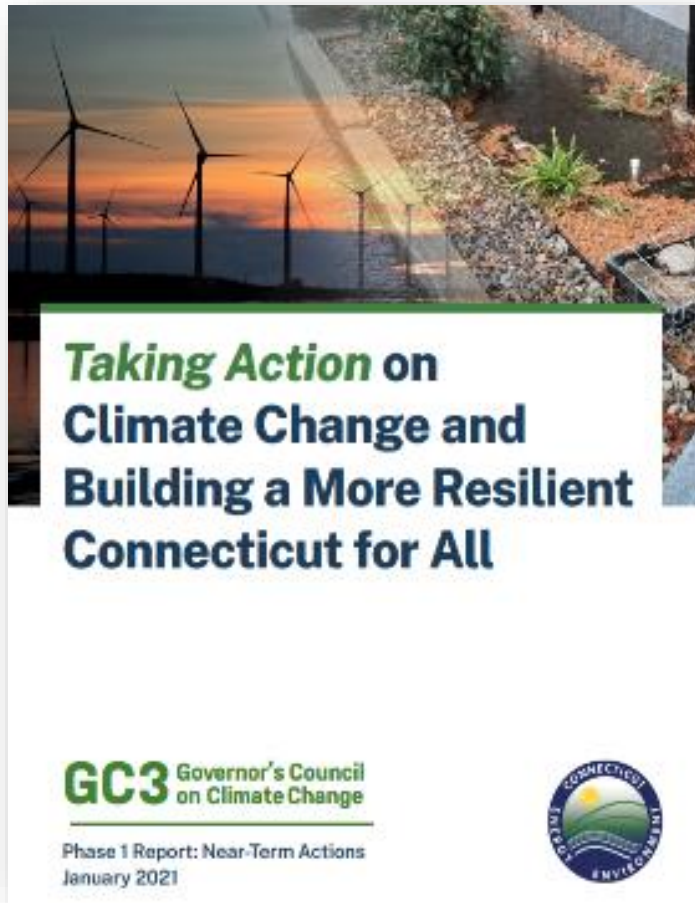


Measure = A quantified method to reduce greenhouse gas emissions that can be broken down into “strategies” which are policies, programs, etc that can be implemented



Strategy = An implementation action (policy, program, etc.) that can be taken to achieve, in part or in whole, a strategy to reduce greenhouse gas emissions

STATE PRIORITY CLIMATE ACTION PLAN – 14 ACTIONS TO IMPLEMENT GOVERNOR’S COUNCIL ON CLIMATE CHANGE RECOMMENDATIONS

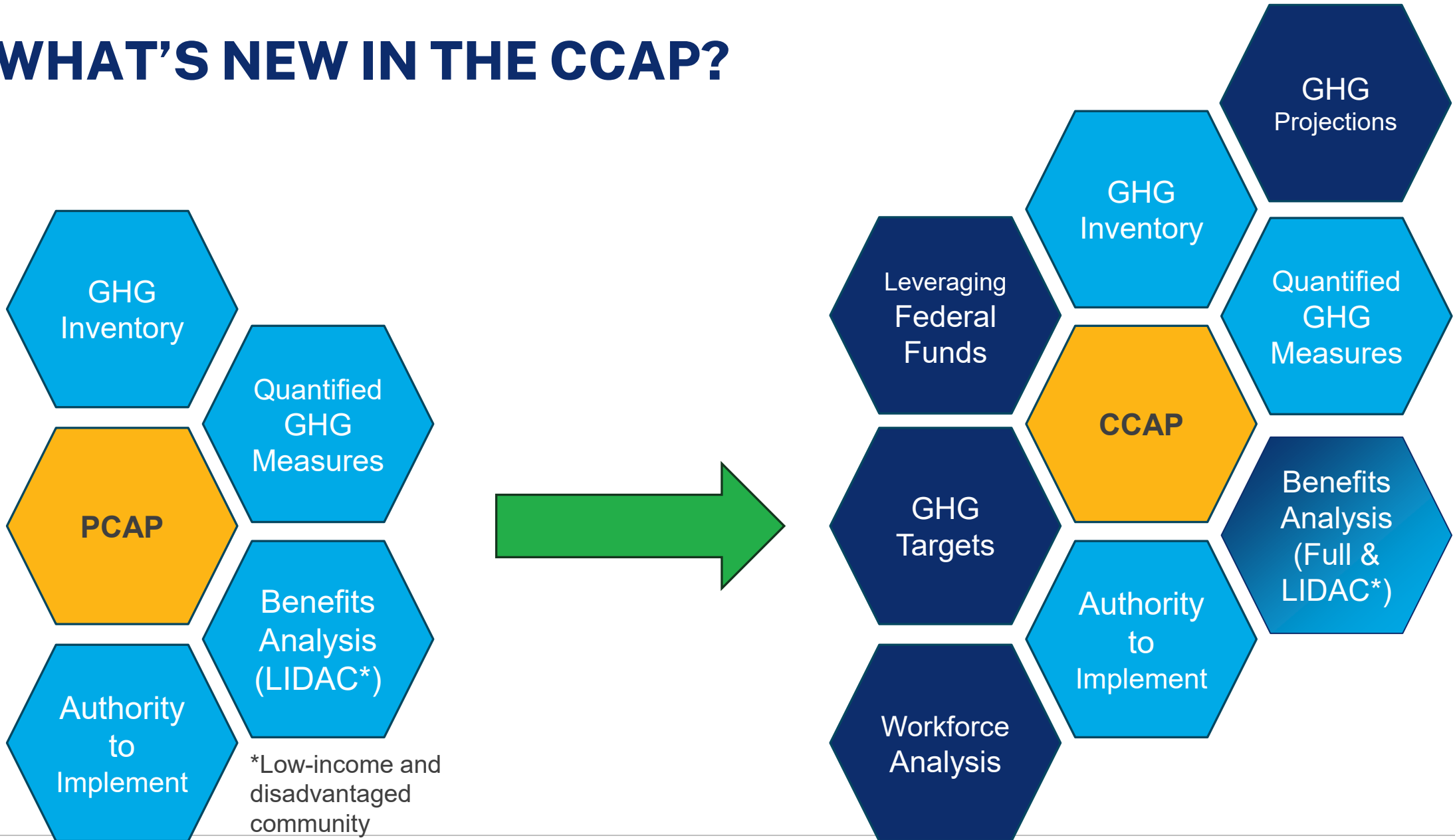


NEXT STEPS: COMPREHENSIVE CLIMATE ACTION PLAN (CCAP)




The CCAP will serve as a roadmap to reach the state's statutory GHG emission reduction targets of:

- **45% below 2001 levels by 2030**
- **a zero-carbon energy supply by 2040**
- **65% below 2001 levels by 2040**
- **an economy-wide net-zero level by 2050, provided direct and indirect emissions of greenhouse gases are at least 80% below the level emitted in 2001**

WHAT'S NEW IN THE CCAP?



COMPREHENSIVE CLIMATE ACTION PLAN (CCAP) REQUIRED ELEMENTS

Requirement	Explanation
GHG Inventory	Emissions sources and sinks from all sectors. (Using the annual GHG inventory required under CT Global Warming Solutions Act of emissions from: transportation, electric supply, residential and commercial buildings, industry, waste, and natural and working lands)
 GHG Targets	Set economywide near-term and long-term targets as well as sector targets for at least the highest emitting sectors. (Using the state's statutory emissions and zero carbon energy sector goals as amended under HB5004 and proposing additional sector targets.)
 GHG Projections	Modeling GHG emissions (and sinks, if feasible) in the absence of plan measures (a.k.a. business-as-usual) and under a scenario where the plan is fully implemented.
 Quantified Reduction Measures	Methods to reduce GHG emissions to meet the GHG reduction targets. Plan will also identify strategies for each measure. (e.g. <u>Measure</u> : increase building energy efficiency. <u>Strategy</u> : provide incentives for home insulation)

COMPREHENSIVE CLIMATE ACTION PLAN (CCAP) REQUIRED ELEMENTS

Requirement	Explanation
NEW Workforce Planning Analysis	Analysis of anticipated workforce shortages that could prevent achieving the goals described and identify potential solutions and partners that are equipped to help address those challenges.
Authority to Implement	Existing statutory or regulatory authority to implement measures, or whether such authority still must be obtained.
Leveraging Federal Funds	Identify other funding programs that are available or have been secured from federal, state, local and private sources that could be leveraged.

COMPREHENSIVE CLIMATE ACTION PLAN (CCAP) REQUIRED ELEMENTS

Requirement	Explanation
NEW Co-Benefits Analysis	Quantified benefits from GHG reduction measures include but are not limited to: <ul style="list-style-type: none">• decreased energy costs from energy efficiency improvements.• increased climate resilience• co-pollutant emission reductions (e.g., criteria air pollutants and air toxics),• improved access to services and amenities, and• jobs created and workforce development,

CCAP & THE TRIPLE IMPACT PLAN – WAYS TO PARTICIPATE



PUBLIC COMMENT LOGISTICS

- Please keep your mic muted and camera off unless you are called on to speak.
- If you have not signed up to speak, please send a direct message via the chat.
- Speakers will have 2 minutes.
- We will accept additional comments in writing via email to deep.climatechange@ct.gov
- Note that the chat is public record. If you feel more comfortable submitting your comment there, please do so. Please make sure your comment is public as direct messages may not be recorded.