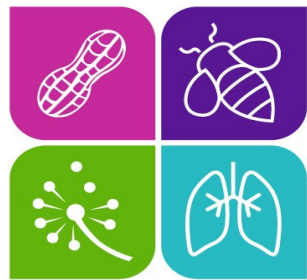




THE SCHOOL NURSE BULLETIN

MAY 2015

Stephanie G. Knutson, MSN, RN Education Consultant



2015 National ASTHMA & ALLERGY Awareness Month

MAY IS NATIONAL AWARENESS MONTH

Important Dates:

May 5, 2015 - World Asthma Day
May 10 -16, 2015 – Food Allergy Awareness Week

Resources for Schools

Asthma Information

- ◆ Asthma and Allergy Foundation <http://www.aafa.org/display.cfm?id=8>
- ◆ Centers for Disease Control and Prevention (CDC) <http://www.cdc.gov/asthma/>
- ◆ CDC Resources for Health Professionals and Schools <http://www.cdc.gov/asthma/info.html>
- ◆ Connecticut State Department of Education (CSDE), Clinical Procedure Guidelines for Connecticut School Nurses www.ct.gov/sde/schoolnurse
- ◆ Connecticut State Department of Public Health, Asthma Program http://www.ct.gov/dph/cwp/view.asp?a=3137&q=387988&dphNav_GID=1948&dphPNavCtr=|47014|#50324

Food (and Other) Allergy and Anaphylaxis Information

- ◆ Asthma and Allergy Foundation <http://www.aafa.org/display.cfm?id=9>
- ◆ Centers for Disease Control and Prevention (CDC) <http://www.cdc.gov/healthyyouth/foodallergies/>
- ◆ CDC, Frequently Asked Questions (Voluntary Guidelines for Managing Food Allergies In Schools and Early Care and Education Programs) http://www.cdc.gov/healthyyouth/foodallergies/pdf/Food_Allergy_Guidelines_FAQs.pdf
- ◆ CDC, Tool Kit for Managing Food Allergies in Schools <http://www.cdc.gov/healthyyouth/foodallergies/toolkit.htm>
- ◆ CSDE, Guidelines for Managing Life-Threatening Food Allergies in Connecticut Schools (Includes Guidelines for Managing Glycogen Storage Disease) www.ct.gov/sde/schoolnurse



What have you accomplished this year school nurses? What services have your provided to the students in Connecticut?

See below...

2014-15 Health Services Program Information Survey / Concussion Reporting

Public Act No. 14-66, An Act Concerning Youth Athletics and Concussions requires that for the school year commencing July 1, 2014, and annually thereafter, the State Board of Education shall require all local and regional school districts to collect and report all occurrences of concussions to the board.

In response to this new reporting requirement, the Connecticut State Department of Education (CSDE) has incorporated concussion questions into the existing CSDE *Health Services Program Information Survey* (Survey) that is completed annually by school nurses and school nurse supervisors throughout the state since 2004.

While the full completion of the Survey is not mandatory, **questions 86a through 86f must be completed by all local and regional school districts in order to comply with the concussion reporting requirements of Public Act No. 14-66.** Over the past eleven-year period, response rates of Connecticut school districts have ranged from 61 to 89 percent, providing valuable data that assists local and regional boards of education and state agencies with information on the health status of students. We therefore encourage completion of the entire survey.

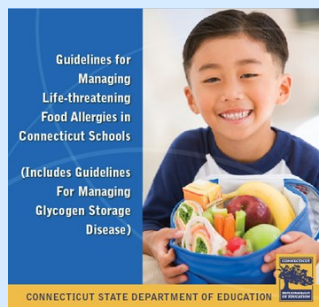
All Surveys MUST be completed by June 15, 2015, to allow adequate time for data analysis.

INSTRUCTIONS

(!!! Complete the survey for the 2014 - 15 school year only !!!)

- ◆ All information needed to complete the Survey may be found on the EDUCATION CONNECTION Web site at www.educationconnection.org.
- ◆ On the homepage near the top of the page you will see a list of links.
- ◆ The last link in the row is titled, "School Services". Please click on that link. On the left side of the next page you will see a list of links. Click on the bottom link in the list, "The Center for Program Research & Evaluation (CPRE)". On the next page, the bottom link on the left is the link for "State Department of Education Health Services Survey". Please click on that link to enter the "SDE Health Services Survey" Web page.
- ◆ On that Web page, you will see:
 - ◇ instructions to complete the survey/questionnaire;
 - ◇ a form for data collection by school nurses at the building level;
 - ◇ reports from the last years of data collection including the summary reports tracking trends over time; and
 - ◇ a list of all school districts in Connecticut and their school codes is also posted for your convenience.
- ◆ Each School Nurse Coordinator/Supervisor will need to gather some of the data from each building and compile the information. As the coordinator/supervisor, you will be entering only the totals for your district into the Survey. **Only one survey per school district is accepted by the Survey Administrator.**

Please feel free to contact me at 860-807-2108 or stephanie.knutson@ct.gov if you have any questions.



Managing Life-Threatening Food Allergies in Connecticut Schools

The Connecticut State Department of Education (CSDE) in collaboration with the State Department of Public Health (DPH) has developed ***Guidelines for Managing Life-Threatening Food Allergies in Connecticut Schools (Guidelines)*** to assist Connecticut public school districts and nonpublic schools (that are served pursuant to Connecticut General Statute [CGS] 10-217a) in effectively managing the health and safety needs of children with life-threatening allergic conditions. Each local and regional board of education must therefore:

- ◆ implement a plan based on these ***Guidelines*** for the management of students with life-threatening food allergies enrolled in the schools under its jurisdiction;
- ◆ make such plan available on such board's Web site or the Web site of each school under such board's jurisdiction, or if such Web sites do not exist, make such plan publicly available through other practicable means as determined by such board; and
- ◆ provide notice of such plan in conjunction with the annual written statement provided to parents and guardians as required by subsection (b) of section 10-231c of the C.G.S.

The ***Guidelines for Managing Life-Threatening Food Allergies in Connecticut Schools*** is located on the CSDE's Health Promotion Services/School Nurse Web site at www.ct.gov/sde/schoolnurse.

Connecticut State Department of Public Health (DPH) Asthma Program

The mission of the program is to reduce asthma associated morbidity and mortality and improve the quality of life for Connecticut residents living with asthma.

Asthma in Connecticut

Asthma is a chronic disease of the respiratory system that is characterized by reversible obstruction of the airways and airway hyper-responsiveness to a variety of stimuli. In Connecticut, it has been found that the following population subgroups are disproportionately affected by asthma: children, females, Hispanics, non-Hispanic Blacks, and residents of the state's five largest cities.

Statistics:

- The prevalence of Connecticut adults reporting current asthma increased from 7.8% in 2000 to 9.2% in 2010.
- Asthma is the single most avoidable cause of hospitalization, yet it is consistently one of the most common admitting diagnoses in pediatrics.
- In 2009, Connecticut spent over **\$112 million** for acute care due to asthma as a primary diagnosis.
- Also in 2009, **\$80.3 million** spent on hospitalization charges and **\$32.6 million** on emergency department (ED) visit charges.

Visit the DPH Web site for additional valuable and informative educational resources at

http://www.ct.gov/dph/cwp/view.asp?a=3137&q=387988&dphNav_GID=1948&dphPNavCtr=|47014|#50324



2014 -15 ED 513 Report - Reimbursement of Health Services for Children in Nonprofit Private Schools



Section 10-217a of the Connecticut General Statutes requires each town or regional school district that provides health services to children attending its public schools, in kindergarten through Grade 12, to provide the same services to children in those grades who attend nonprofit private schools within their jurisdiction, when a majority of children in those nonprofit private schools are Connecticut residents. In order to administer the grant program, which funds the health services in these nonprofit private schools, the Connecticut State Department of Education (CSDE) has determined that information is needed regarding the health services that participating towns or regional school districts provide to their public school children.

Form ED 513, which serves as the blueprint for each town or regional school district that delivers health services to children attending its eligible nonprofit private schools, must now be completed online by the local or regional school district of each participating town. Please note the following:

1. Access the CSDE's data collection Web site at <https://www.csde.state.ct.us> and complete the 2014-15, information for the ED513 report for your district by **Monday, June 15, 2015**;
2. Follow the instructions for the security pop-up windows until reaching the Web page that lists the various Department data collection options. Click on "ED-513 Health Services Plan - Current and Prior Years"; and
3. You will need to contact your district's "school business official" regarding access to the ED513 report on the CSDE's data collection Web site at <https://www.csde.state.ct.us>.

Questions regarding the Web site may be referred to Bhuvana (Bonne) Pathman, in the Bureau of Grants Management at 860-713-6458 or bonne.pathman@ct.gov.

If you have questions regarding the eligibility of a particular health service, please feel free to contact me at 860-807-2108 or stephanie.knutson@ct.gov.



**STEPHANIE G. KNUTSON, MSN, RN
EDUCATION CONSULTANT**

Connecticut State Department of Education
Bureau of Health/Nutrition, Family Services and
Adult Education
25 Industrial Park Road, Middletown, CT 06457

Phone: 860-807-2108
E-mail: stephanie.knutson@ct.gov

Nondiscrimination Statement

The Connecticut State Department of Education is committed to a policy of equal opportunity/ affirmative action for all qualified persons. The Department of Education does not discriminate in any employment practice, education program, or educational activity on the basis of race, color, religious creed, sex, age, national origin, ancestry, marital status, sexual orientation, gender identity or expression, disability (including, but not limited to, mental retardation, past or present history of mental disability, physical disability or learning disability), genetic information, or any other basis prohibited by Connecticut state and/or federal nondiscrimination laws. The Department of Education does not unlawfully discriminate in employment and licensing against qualified persons with a prior criminal conviction. Inquiries regarding the Department of Education's nondiscrimination policies should be directed to Levy Gillespie, Equal Employment Opportunity Director/American with Disabilities Act Coordinator, Title IX/ADA/Section 504 Coordinator, State of Connecticut Department of Education, 25 Industrial Park Road, Middletown, CT 06457 860-807-2071.